



TRUE VIEW 6700 WELDING HOOD

INSTRUCTIONS FOR USE





WARNING

Read and understand all instructions before using!

TV6700 Welding helmets are designed to protect the eyes and face from sparks, spatter, and harmful radiation under normal welding conditions. They will not protect against severe impact hazards, including fragmenting grinding disks.

This helmet will never protect against explosive devices or corrosive liquids. Machine guards or eye splash protection must be used when these hazards are present.

Impact resistant, primary eye protection, spectacles or goggles that meet appropriate protection specifications, must be worn at all times when using this welding helmet.

Avoid work positions that could expose unprotected areas of the body to spark, spatter, direct and/or reflected radiations. Use adequate protection if exposure can not be avoided.

BEFORE WELDING

Check the front cover lens to make sure that they are clean, and that no dirt is covering the sensors on the front of filter cartridge . Also check the front / inside cover lens and the front lens retaining frame to make sure that they are secure.

Inspect all operating parts before each use for signs of wear or damage. Any scratched, cracked, or pitted parts should be replaced immediately before using again to avoid severe personal injury.

Check for light tightness before each use.

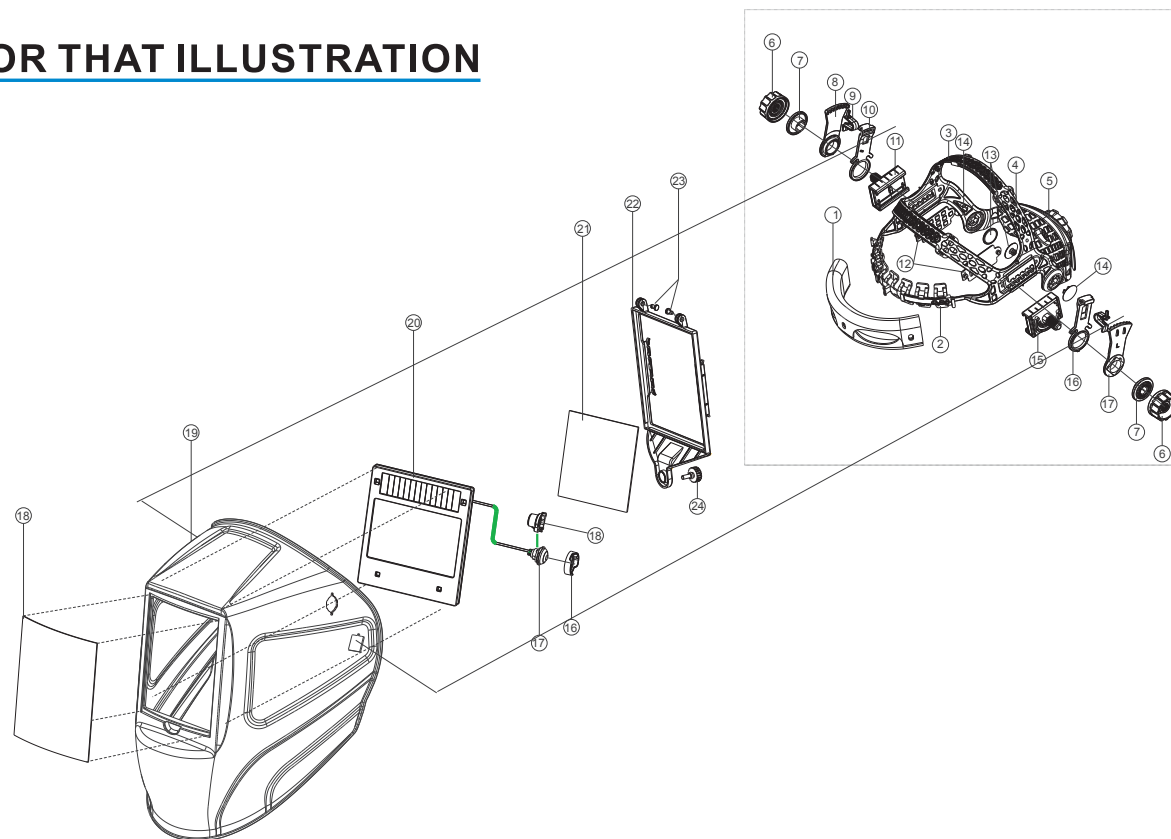
Select the shade number you require at the turn of a shade knob (len specific).Finally be sure that the shade number is the correct setting for your application.

Adjust headband so that the helmet is seated as low as possible on the head and close to your face. Adjust helmet's angle when in the lowered position by turning the adjustable angle limitation washer.

Do not make any modifications to either the welding lens or helmet, other than those specified in this manual. Do not use any replacement parts other than those specified in this manual. Unauthorized modifications and replacement parts will void the warranty and expose the user to the risk of personal injury.

Failure to follow these warnings and/or failure to follow all of the operating instructions could result in severe personal injury.

TV6700 SERIES FOR THAT ILLUSTRATION



- 1 Sweatband
- 2 Forehead Band
- 3 Right Belt
- 4 Left Belt
- 5 Occipital pad

- 6 Headband Adjusting Nut
- 7 Washer
- 8 Right Limitation Washer
- 9 Angle Pin
- 10 Right Adjustable Washer

- 11 Right Slider
- 12 Right Trim
- 13 Rotating Shaft Inside Trim
- 14 Rotating Shaft Outside Trim
- 15 Left Slider

- 16 Left Adjustable Washer
- 17 Left Limitation Washer
- 18 Front Cover Lens
- 19 Helmet Shell
- 20 Auto Darkening Filter

- 21 Rear Cover Lens
- 22 Press Frame
- 23 Obturator Spindle
- 24 Nut
- 25 Grinding Button Front Cover

- 26 Grinding The Button And Its Center Frame
- 27 Grinding Button Inner Cover

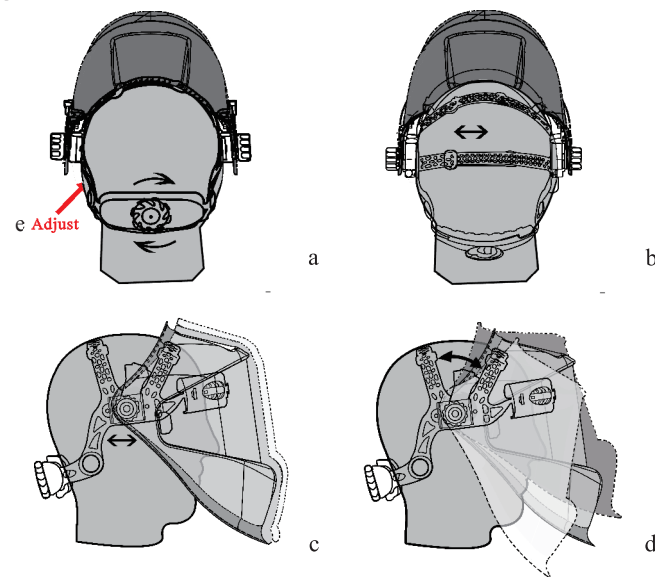
I. Product Features

- This product is of completely new design, with shell material high-and-low-temperature resistant, corrosion resistant, flame retardant, soft, tight tight, intensity high, and durable.
- Clear vision on the work piece both prior and during welding, which means improved quality and higher efficiency.
- Overall-process protection against ultraviolet(UV)and infrared(IR)radiation. WH8000 is equipped with lithium battery and solar cells that extends the life of the battery.
- The product is in full conformity with related ANSI, CE, CSA, AS/NZS safety standards.

II. Operating Instruction

1. Peel off the protective film inside and outside the surfaces of lens.
2. Prior to welding, the filter screen is in a transparent and clear state, enabling a clear vision on work piece, at the moment of starting welding, it automatically changes the filter screen from clear to dark state. At the moment of stopping welding, the filter screen automatically changes from dark to clear state.
3. Adjust the operation mode to Welding or Grinding. (Len specific). While operating in Grinding mode, the filter do not react to welding arc and keep clear.
4. Adjust the Shade (Len specific) number knob according to different welding current and welding process to select proper shade number: see attached table 1;
5. Adjust the sensitivity level (Len specific) Stop welding, adjust the sensitivity level to high till filter flashes. Adjust the sensitivity level a little lower then.
6. Adjust the delay time (Len specific). Delay time feature the time the Len turn from dark to clear state after stop welding.
7. Adjust the headgear: see attached figure 2.
 - a. Put the helmet on the head, Press the adjustable knob down (at the rear head position), at the same time, rotate the knob counterclockwise to increase the circumference of the headband, or rotate the knob clockwise to decrease the circumference. See figure 2.a
 - b. Adjust the depth of the helmet to best position. See figure 2.b
 - c. Adjust the distance between the helmet and your face. See figure 2.c
 - d. Adjust the Angle limitation position of the helmet. See figure 2.d

Figure 2



e. Adjust the Angle behind you head to suit your headform

As a result of above mechanism action, the welder surely feels more comfortable than before, and are in working with more high proficiency at any time.

III. Warning

- TV6700 applies to all kinds of welding operations.
- The Autodarkening filter must be equipped with outside protection plate to prevent potential unrepairable hazard.
- Change the scratched or broken lens frame that reduces visual field and protection as soon as possible.
- Change the scratched or broken protection plate, do not bump into lens during replacement.
- Before welding, select proper shade number according to welding process.
- The operating temperature range is 23°F to 131°F (-5°C to 55°C). When ambient temperature is below the lower limit, the response speed of liquid crystal materials of lens frame assembly slower a little, no other protections will be affected.

- Do not store lens frame in a location near a heat source or in a high moisture place.
- Do not clean lens frame with alcohol, gasoline, or diluted solvent; and do not immerse it into water.
- Frequently change the sweatband.
- Change failure parts with the parts provided by the authorized supplier.
- Should this helmet not darken upon striking an arc, stop welding immediately and contact your supervisor or your dealer.

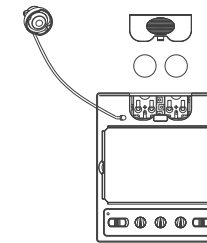
IV. TECHNICAL SPECIFICATIONS

AUTO DARKENING LENS SPECIFICATIONS	
MODEL	TV6700
Cartridge Size (mm)	133*114
Viewing Window Size (mm)	100*67
Lens Thickness (mm)	9
Weight (g)	145
Light State	DIN4
Dark State	DIN5-9 DIN9-13
Switching time (ms)	0.04
Delay time Adjustment	Inside & Stepless (0.15~0.80s)
Sensitivity Adjustment	Inside & Stepless
Shade Adjustment (stepless)	Inside
Sensors	4
Operation temperature	-5℃ (23℉) ~ +55℃ (131℉)
Grinding	Outside
Power Supply	Solar power & replaceable battery
TIG Capability	>2A
Warranty (years)	2
Optical Class	1/1/1/2
Certification	CE EN379、ANSI Z87.1
Function	High-Light/Low-Light
Inner protection lens (mm)	103.7*69.5*1

Material of helmet: NYLON

Weight: 490g (TV6700) (May differs depending on filter models & painting)

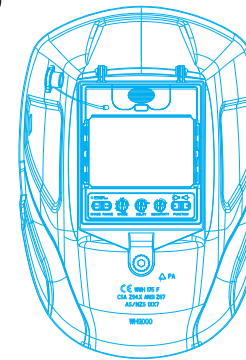
Battery & Disassemble Procedure



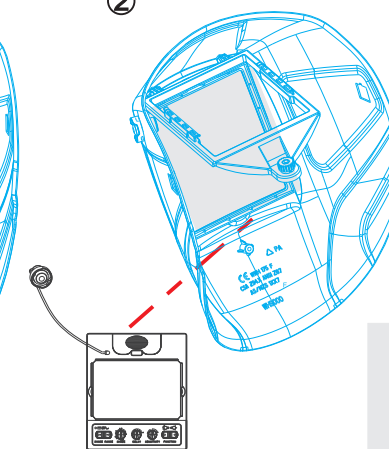
TV6700

Filter, Protection Plate Assemble & Disassemble Procedure

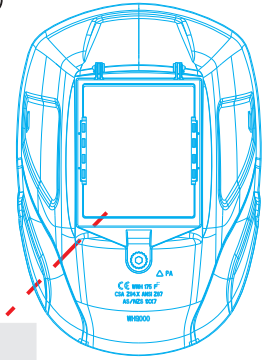
①



②



③



Severe personal injury could occur if the user fails to follow the aforementioned warnings, and / or fails to follow the operating instructions.

COMMON PROBLEMS AND REMEDIES

***Irregular Darkening Dimming**

Headband has been set unevenly and there is an uneven distance from the eyes to the filter's lens(Reset headband to reduce the difference to filter).

****Auto-Darkening Filter Does Not Darken Or Flickers**

Front cover lens is soiled or damaged (change lens cover)

Sensors are soiled (clean the sensors' surface)

Welding current is too low (Adjust sensitivity to high)

*****Slow response**

Operating temperature is too low(do not use at temperatures below-5°C or 23°F).

****** Poor Vision**

Front / Inside cover lens and / or filter lens are soiled(change lens)

There is insufficient ambient light

Shade number is incorrectly set (reset the shade number)

*******Welding Helmet Slips**

Headband is not adjusted properly(readjust headband)

WARNING! Operator must stop using the auto-darkening filter welding helmet immediately if the above-mentioned problems cannot be corrected.Contact the dealer.

NOTE:All specifications and technical data are subject to change without prior notification.

Attached Table 1

Recommended Shade Number According to BS679 and EN169

Welding Process	Arc Current(Amperes)																							
	0.5	1	2.5	5	10	15	20	30	40	60	80	100	125	150	175	200	225	250	275	300	350	400	450	500
SMAW	9									10	11					12				13				14
MIG(heavy)	10											11			12				13				14	
MIG(Light)	10											11			12			13			14			15
TIG,GTAW	9							10	11			12			13		14							
MAG/CO ₂	10										11	12	13				14			15				
SAW	10															11	12	13	14	15				
PAC	11													12			13							
PAW	2.5	3	4	5	6	7	8	9	10	11	12			13			14				15			

Adopt greater or smaller shade number pursuant to the field condition.

LIMITED 2 YEAR

WELDING HELMET WARRANTY:

- Warranty refunds and exchanges require proof of purchase, no exceptions.
- Purchaser must first contact Blue Demon Welding Products (BDWP) at 888-905-6737 for an RMA Number before BDWP will accept any warranty returns. Final determination of warranty on welding and cutting equipment will be made by BDWP.

WARRANTY REPAIR:

BDWP WILL NOT ACCEPT RESPONSIBILITY OR LIABILITY FOR REPAIRS UNLESS MADE BY BDWP. BDWP'S LIABILITY UNDER THIS WARRANTY SHALL NOT EXCEED THE COST OF CORRECTING THE DEFECT OF THE BDWP PRODUCT. BDWP WILL NOT BE LIABLE FOR INCIDENTAL OR CONSEQUENTIAL DAMAGES (SUCH AS LOSS OF BUSINESS, ETC.) CAUSED BY THE DEFECT OR THE TIME INVOLVED TO CORRECT THE DEFECT. THIS WRITTEN WARRANTY IS THE ONLY EXPRESS WARRANTY PROVIDED BY BDWP WITH RESPECT TO ITS PRODUCTS. WARRANTIES IMPLIED BY LAW SUCH AS THE WARRANTY OF MERCHANTABILITY ARE LIMITED TO THE DURATION OF THIS LIMITED WARRANTY FOR THE EQUIPMENT INVOLVED. THIS WARRANTY GIVES THE PURCHASER SPECIFIC LEGAL RIGHTS. THE PURCHASER MAY ALSO HAVE OTHER RIGHTS WHICH VARY FROM STATE TO STATE.

Returns

Before returning any item, please contact our Customer Solutions or Tech Advisors at (888)905-6737 who can help you diagnose performance issues.

- Contact Customer Service at 888-905-6737 or sales@weldingmaterialsales.com to arrange your return. All returns must have a RMA number.
- Refunds are for the value of the product only.
- Warranty refunds and exchanges require proof of purchase, no exceptions.

Limitations and Exclusions

To help protect our customers and make sure every return or exchange is dealt with fairly this policy is subject to a few important conditions:

- Equipment that, in our opinion, has been abused or misused will not be eligible for refund or replacement, even within the warranty period.
 - All returns for exchange or refund must be complete, with all parts and accessories.
 - Proof of purchase is required. Shipping and handling charges are nonrefundable.
 - Valid for all items purchased from authorized distributors of BDWP. All purchases from an unapproved third party are subject to the policies of the third party.
-
-



Blue Demon Welding Products
PO Box 786
Geneva, IL 60134-0786
USA
888-905-6737
www.bluedemonwelding.com